

Update from the Village Life Magazine Committee

Have you noticed the difference in this issue of our magazine? If not, don't search through to find it, just turn back to the cover and you will see our new cover picture. We have used the original picture for four years now, so we are grateful to Ann Williams from the Ifton Meadows Management Committee for sending us the new one showing just how the Dingle has developed over time, but remains just as beautiful. Thanks Ann, keep up the good work and best wishes for your celebration event on August 19th – we hope it is a good one and produces a few more volunteers for you at Ifton Meadows as well!

Our other big thank you this month is to the 3 Parishes Big Local who have not only given us as sizeable grant for this year (which we asked for) but have also given us an advance grant for next year (without us asking for it). This double grant will help both with our current costs and with our cashflow over the two-year period.

On the subject of cost, we are pleased to see a new regular advert from Jan and Mike Crowe for the Tea and Coffee Shop that is now open on the former 'Ushers' site at the canal bridge. We also welcome the first advert for fitness classes from Wendy Arthan who is launching events in all three of our local villages in September. We wish both ventures well – but always welcome businesses both new and old to advertise in Village Life. See page 8 for more information on sizes and rates.

Finally, a special mention to one of our Community First Responders, John Roberts MBE. After many years of unstinting work in the role, John is retiring, so in this issue we pay tribute to his work and commitment, and we wish him well in his next retirement activity.

John Stevens
Chair of the Editorial Committee

.....
...
**If you wish to submit an article or advertise in the next publication
please email it to stmartinsvillagelife@gmail.com
by no later than Wednesday 19th September 2018**
.....

Disclaimer: Whilst we make every attempt to ensure the accuracy and reliability of the information contained in these pages, errors may occur. Village Life Magazine will not be held responsible for loss, however arising, from the use of or reliance on this information. The full text of this disclaimer can be found on www.stmartins-online.org.uk/villagelife

This publication will be delivered **FREE** to every household within the Parish of St Martins.
Should you not get one please email
stmartinsvillagelife@gmail.com

**There is a large print version at the St Martins Centre for
people with sight impairment.**

Parish Council

From the Chair

A lifetime ago I when was in HM Forces, the joke shared among us was that the Army had only two speeds: 'neutral' and 'panic'. In the neutral phase, what routine maintenance had to be done was done; sports were played; regimental life ticked along in all its duties. In the panic phase, routine maintenance was kicked into touch and we moved into top gear and achieved incredible feats in a short time. When I came into chivvy street, I found there were not two, but three speeds: neutral, panic, and reverse.

The first two were the same but the last speed appears to be peculiar to government at all its levels. At the top level, Brexit may happen, but in reverse – in name not in practice. At the middle level, the Unitary Authority says it is strapped for cash then suddenly reverses and finds reserves after stinging us for topmost percentage increase in council tax. At the bottom level, Town and Parish Councils endeavour, through unpaid volunteers, to wade through and understand local government jargonese in order to achieve best benefit for their communities. Mostly amateurs, we put forward sensible suggestions, only to have the professional employees reverse our suggestions because *they* know what is financially best for their departmental budget. What I am leading up to is this. Your Parish Council may have finally gotten Shropshire Highways to consider redesign and to redevelop the 'roundabout-waiting-for-an accident' located near Stans Superstore, but the problem – which puts us in reverse – is getting Shropshire Council to open its coffers of all the cash stored up (something like £20 million for the county) for such a sensible project as ours. The devil is in the jargon; mine eyes have seen the detail, thanks to someone more experienced in local government than myself. A simple re-wording of a paragraph would release the cash and benefit many community projects. But will any Local Councillor take this problem by the scruff of the neck and shake common-sense into the jargon? Will any Shropshire Council employee have the gumption to point out to their boss that this anomaly sucks? Will England ever win the World Cup, again? I was there in 1966 (well I saw it on a black and white TV). "They think it is all over – it is now!" said the commentator when the last English goal was scored. Some dreams do become reality. Martin Luther King famously preached, "I have a Dream..." and his dream was fulfilled. England can dream, and yes, one day they may win the World Cup, again. So too we can dream. The fight for a redeveloped roundabout is not over. We dare dream that Shropshire Council actually bless the county and reverse their jargon and thus release funding for the projects that we – who have the boots on the ground knowledge – know need to be done for the benefit of our local communities.

Keep enjoying the Summer;
after the heat waves of 1976
and this year, the next one
may be in 2060.

Kind regards

Glenn Pennington

Chairman St Martins Parish
Council



Report from St Martins Parish Council Clerk



With the Chairman away on holiday, Vice Chairman Councillor Andrew Cast chaired the July Parish Council meeting. He was joined by all councillors in saying that the hanging baskets this year were looking the best they had been thanks to the planting by Neil Rheade and the almost daily watering by Huw Manford.

Two of our Councillors had recently met with highway officers from Shropshire Council one early morning to witness the behaviour of motorists, especially HGV drivers, going over (rather than round!) the mini island outside Stans Superstore. Shropshire Council's highways design team are now going to look at various proposals to try to improve the situation at this junction.

The Parish Council, working with our Shropshire Councillor Steve Davenport, are planning to look at the possibility of having St Martins designated as a test site for the introduction of a 20 mph speed limit and at the same time extending the 30 mph and 40 mph limits on all approach roads to the village.

A number of pot holes were again highlighted. While progress was welcomed on those that had been well repaired, there are still some that had been marked out for some time on which no action had been taken, and which will again be reported to Shropshire Council highways for urgent action.

Fly tipping was again reported to be an increasing problem, especially in Clarkes Lane and Moors Bank.

Concern was also expressed over the standard - and in some areas the complete lack - of grass cutting along the roadside verges.

A protruding manhole cover opposite Ifton View will be reported to Severn Trent.

There is no Parish Council meeting in August, therefore the next Parish Council meeting will be held on the 13th September 2018 starting at 7pm in The Moors Community Centre.

Edward Davies
St Martins Parish Clerk.

Current Parish Councillors

Ashley Allum	01691 770042
Andrew Cast	01691 773389
Gordon Fryer	01691 774520
Mark Hayball	01691 770207
Brian Herbert	01691 772647
John Hodgson	07841 451212
James Hoos	01691 661218
Duncan Laing	07702 991 845
Nina Mistry	01691 657324
Glenn Pennington	01691 778477
Lesley-Anne Roberts	01691 776438
John Sands	01691 772394
John Stevens	01691 770677
Sue Schofield	01691 777710
Helen Williams	01691 777561

Shropshire Council

Councillor Steve Davenport

Unitary Councillor, St Martins School Governor, Chair of St Martins Centre Trustees

Tel 07944097876 Email steve.davenport@shropshire.gov.uk

~~~~~

The summer is well and truly upon us , and what a pleasant change it is to have plenty of sun in our lives. For my cabinet role on highways at Shropshire Council this also brings its problems with melting tar. Nothing is ever straightforward!

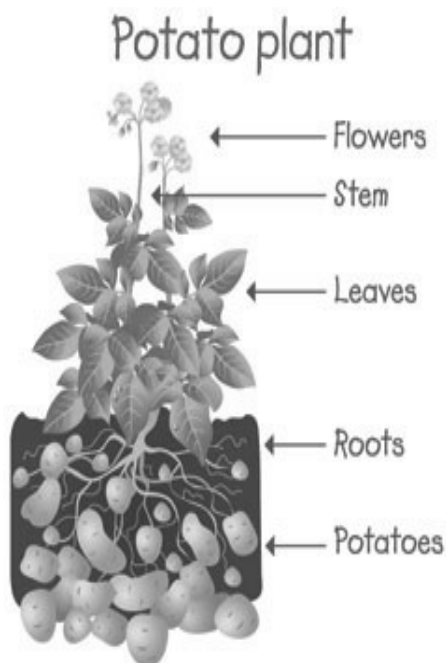
In the Village, I'm putting forward a suggestion that we implement a 20 mph speed limit on all roads in the village and this seems to have received a positive response. Clearly it does not suit everyone, so I'd like to know from more of you of your thoughts before any decision is made. This will be a lengthy process and will also involve discussion with and comments from the police.

Also, jointly with the Parish Council, we are having new plans drawn up on how the roundabout junction near Stans might be improved to make that whole area safer to negotiate.

We have eventually got an outline planning application for the Ifton school site to be developed as a mixed use site for housing and office space. The PC and I are also looking at the local plan review until 2036 to assess future housing needs for our community.

As deputy chair of Governors at St Martins school I'm pleased to express my pleasure on the continued excellent work there, not only the improvement to the buildings (as we have just been awarded a further £450,000) but also to the rising quality in education lead by Sue Lovecy. The latter is reflected in the fact that we now have a waiting list for pupils wanting to enrol.

As always, please do not hesitate to contact me by email, by phone or face to face at the Centre.



## **Potato growing update!**

A number of young people from the village are carefully growing the potatoes which were provided to them earlier this year using a special bag and compost. Many of the allotment holders also had a potato and a bag. The aim is to grow the heaviest potatoes.

We look forward to seeing whose potatoes are heaviest when the bags are brought for the weigh-in at the Grow It, Make It Show It show on Saturday September 15 at The Miners Institute (opposite Stans). Why not come along and see who is Young Vegetable Grower of the Year? See who wins for the challenge of heaviest potatoes - adult or young person?

And a message to all those growing their spuds: It's been a tough year - all that rain and now none. It's difficult to know what to do for the best to grow things properly. So we thank you for carrying on with the challenge and look forward to seeing what you have managed during this difficult season.



# St. Martins Parish Church

## Service times

Every **Sunday: 9:30am** our usual Morning Worship Service

1st Sunday of each month "**Sunday FIRST**" **Messy Church** at **11am**



Starts with coffee, cake and some **craft activities**.

Then a family service with songs, Bible story and prayers

**Christianity Explored evenings** beginning in September for those wanting to be Confirmed or Baptised.

**Confirmations Service** - 14th October - with Bishop Michael

## **4 Peak Sponsored Walk.**

Thank you to all those who supported us raising money for The Charlotte Harter Foundation and St. Johns Weston Rhyn.

On the 7th July we completed our challenge of climbing Y



Garn (947m), Glyder Fawr (1001m), Elidir Fawr (924m) and Tryfan (917m) in fantastic weather with some stunning



views. We were able to listen to the commentary of the **England v Sweden** match playing that afternoon. Our group were able to broadcast each England goal to the rest of the people on the mountain range with loud cheers, keeping them up to date. The final whistle blew as we reached our last peak of Tryfan - a fitting end to a perfect day.

## Weekly Events

**Tuesday** Coffee morning at 10:30am in the Chapter house.

**Thursdays** 9:30am Mid week service in church - ***Having a break during August***

**To book a Christening or Wedding and for any other enquiry please contact** Revd Stuart Jermy - [sjvicar2@sjvicar.plus.com](mailto:sjvicar2@sjvicar.plus.com); phone 778 468 or text 07766 255436

Or check out our Website [www.stmartinsparish.co.uk](http://www.stmartinsparish.co.uk)

# Ifton Meadows

By Wilfred J. Evison

If we take a walk on Ifton Meadows, then all around we'll see  
Views of the Berwyn Mountains and Shropshire hills and trees  
The Wrekin shows up a hazy blue, the Longmynd a greyish white,  
The Breiddens looking strong and black, against the failing light.

For fifty years this was a pit, with dirt and filth and grime,  
The chimney belching smoke all day, the spoil heap thick in slime  
Over a thousand miners hued the coal from down below  
And by the gate you'll see a coal tub set in concrete, on show



The mine's been shut since sixty eight, the chimney taken down.  
The winding gear has long since gone, but the weighbridge is still sound.

As we wonder aimlessly around, let your thoughts turn to the past  
And in your mind you'll see the men, and hear the hooter's noisy blast.

No doubt you'll wonder what's the reason for the council's loving care

Could it be the fact that a local man was mayor?

No, I think the real reason was the Aberfan disaster

And the children buried there.





# St Martins Methodist Church

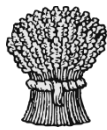
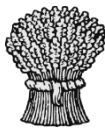
(Ellesmere Road)

Minister: Rev Stella Long 01691 622274

**Thursday Coffee Mornings 10.30 - 11.30**

Come along and join us for coffee, biscuits & a chat.

|            | August 5 <sup>th</sup>   | August 12 <sup>th</sup> | August 19 <sup>th</sup> | August 26 <sup>th</sup> |
|------------|--------------------------|-------------------------|-------------------------|-------------------------|
| St Martins | Circuit Service<br>11.00 | Moors 6.30              | Matthews. HC<br>11.00   | Moors<br>11.00          |
| Moors      | St Martins 11.00         | Songs of Praise<br>6.30 | St Martins. 11.00       | Watts<br>11.00          |



## **HARVEST FESTIVAL**



SUNDAY SEPTEMBER 30<sup>TH</sup> 11.00

## **HARVEST SUPPER**

MONDAY OCTOBER 1<sup>ST</sup> 6.30

## **AUTUMN MESSY CHURCH**

SUNDAY OCTOBER 14<sup>TH</sup> 11.00



Join us for Coffee, biscuits and a chat

**THURSDAYS 10.30 - 11.30**



# Could You Advertise Here?

Do you have a business or service that you want people to hear about? If so, you could advertise it in Village Life which is published every two months and is delivered to every home and most of the businesses in the parish of St Martins. Copies are also placed in Stan' Superstore, the Miners Institute, St Martins Centre and the waiting room at St Martins surgery.

Advertisements come in four sizes:{-

Full A5 Page at £50 per issue (£250 per year)

Half A5 Page at £30 per issue (£150 per year)

Quarter A5 Page at £15 per issue (£75 per year)

Business Card size at 10 per issue (£50 per year)

Payment is in advance, and should be accompanied by the copy for your advertisement, with cheques payable to Village Life.

If you commit to advertise for a full year—that is in six issues continuous issues, the 6th advert is free.

For an advertising application form please call John Stevens on 01691 770677



**SPECIALISING IN PROPERTY MAINTENANCE  
AND LANDLORD SERVICES**

**WE CAN MAKE YOUR LIFE THAT MUCH  
EASIER BY SORTING OUT YOUR  
PROBLEMS FROM A LEAKING TAP TO A  
FULL HOUSE RENOVATION**

**FIND US ON FACEBOOK FOR LATEST OFFERS  
FACEBOOK/KAPMS**

**LIKE OUR PAGE FOR A CHANCE OF WINNING\*  
£25.00 OF STANS SUPERSTORE VOUCHERS**

**KEITH ALLUM**

**01691 774011 / 07752 438 392**

**kapms@btinternet.com**

**Supporting St Martins Centre**

**DEBORAH SHAW**

**Foot Health Practitioner**

I have over 15 years of experience in providing foot care services and am a member of the Accredited Register of Foot Health Practitioners

For a professional and friendly service in the comfort of your own home, helping you with: -

- ♦ **Nail care**
- ♦ **Corns/Hard skin**
- ♦ **Fungal infections**

Please call me for an appointment:-

**01691 777130**



# Tea and Coffee Shop



The former provisions store and bakery 'Ushers' at St Martins Moor Bridge has now re-opened as a 'Tea and Coffee shop'.

Jan and Mike Crowe will now provide a wide range of teas, coffees, hot chocolate and soft drinks and of course some wonderful cakes on a 'pop up' basis for walkers, boaters and locals.

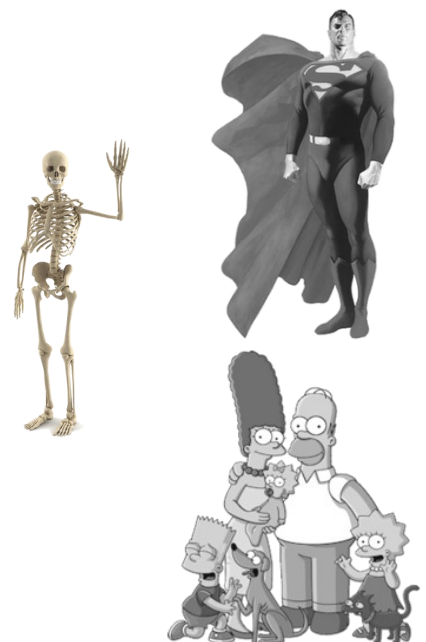
We also offer free-range eggs, homemade jam, and a variety of homemade breads (made to order Tel: 01691 587224). There is also a bric-a-brac and gift stall. Opening hours will be flexible (look for the 'A' board outside). We have inside seating available. Ushers will also offer bed & breakfast to visitors to the area and details can be found on the Airbnb website.

All profits from this venture will be allocated to local charities

---

## General Knowledge

1. By how many consecutive games of cricket did England beat Australia this year?
2. What was a TSR2?
3. When referring to beer what does ABV stand for?
4. Which country had the first woman Prime Minister?
5. From which planet did Superman come?
6. Which country won the first football world cup?
7. How long to the nearest year have the Simpsons been running?
8. How many bones are there in the human body?
9. What percentage of the world's population is left handed?
10. Which is the biggest shark in the ocean?



Answers on page 33

Stan's Superstore, St. Martins, Oswestry. SY11 3AY

Open: Monday – Friday 9am till 6pm, Saturday 9am till 1pm

**FREE** collection of prescriptions from:

St Martins Surgery  
 Chirk Surgery  
 Cambrian Medical Centre  
 Caxton Surgery  
 Plas Ffynnon Medical Centre  
 Ellesmere Medical Practice  
 Overton Medical Practice

**FREE** Delivery Service Available

**FREE** Blood Pressure Testing



**FREE** Diabetes Screening



**For all your preserving  
& pickling needs**

Overton Road, St Martins,  
 Oswestry, Shropshire, SY11 3AY.  
 Tel: 01691 778848 [www.stans.biz](http://www.stans.biz)





# IFTON COLLIERY

Commemorative Project

July already, just 4 months to go until the grand unveiling of the statue 'A Miner of the 60's' (pictured below with the artist Mr George Triggs). It will stand about 7foot 6 inches on top of a 5 foot plinth, that's 12 foot 6 inches.

When the committee went to see it we were awe struck, it is so imposing and the level of detail is amazing. I believe it will be a very fitting memorial to the miners.

Where are we with the fundraising? We need £39,000 to complete the project.

Last week we had a Race Night at the St Martins Institute and raised nearly £900 leaving us with another £13,238 to raise. It is a BIG THANK YOU to all those lovely people who support us at every event we put on and there are those who have just donated, Many of the individuals don't want to be recognised for their support. Kronospan sent us a cheque for £500, Wrekin Housing Trust were very kind in donating £4,000 (that's not a mistake), Stan's, to date, have donated £1,380 and supports us in kind at very nearly every event. Those who have promised a donation are Perrys Garage, Betterskills, Digga Rentals, Russell Williams Garage and Pentons of Oswestry to acknowledge but a few.

Can I put out a plea to anyone else who is thinking about giving a donation not to delay any more - the statue is going ahead and will be installed on Saturday 24th November.

The day will start at St Martins Parish Church with a service of commemoration at 11am, will we then march down to the statue site led by Ifton Colliery Band at about 12:15 Mr Hefin Looker and Mr Terry Ellis will unveil the statue and the original hooter from Ifton will be sounded, From there we will go into the Stute for Hot Drinks and Soup. Moreton Hall School have written a new play which the students will perform and St Martins School Choir will sing a selection of songs including 'Only remember what they have done'. The day will be rounded of with a concert in the evening by DYFFRYN CEIRIOG Male Voice Choir.





# St Martins 6th Annual

**Saturday 15th September**

Spectators 50p  
(Under 12 years and Exhibitors Free)

Raffle & Tea/Coffee Available

Doors open for exhibitors 9:30am

Judging 11:00am – 1:00pm

Doors Open to Public 2:00pm

Prize Giving 3:00pm

All entries must be booked in on

**Friday 14th Sept**

Competition Entry 25p  
(Children's Competitions Free)

Between 5:30 - 7:30pm at **St Martins Miners' Institute**

Below is the list of classes for this year's show. Please remember that you will need to book your entry into the Show at the Miners Institute on Friday 14<sup>th</sup> September 2018

| <b><u>Class</u></b> | <b><u>Section A : Vegetables</u></b>                                                     | <b><u>Class</u></b> | <b><u>Section B : Flowers and Plants</u></b>                                           |
|---------------------|------------------------------------------------------------------------------------------|---------------------|----------------------------------------------------------------------------------------|
| A1.                 | 3 Potatoes                                                                               | B20.                | 5 Dahlias Pompom, any size                                                             |
| A2.                 | 5 Runner Beans                                                                           | B21.                | 3 Dahlias (decorative)                                                                 |
| A3.                 | 3 Onions (10 oz. and under)                                                              | B22.                | 1 Dahlia (large)                                                                       |
| A4.                 | 3 Onions (over 10 oz.)                                                                   | B23.                | 3 Dahlias, Cactus or semi Cactus                                                       |
| A5.                 | 5 Shallots                                                                               | B24.                | 1 specimen HT Rose                                                                     |
| A6.                 | 5 Radish                                                                                 | B25.                | 3 Gladioli                                                                             |
| A7.                 | 3 Leeks                                                                                  | B26.                | 5 Sweet Pea Stems                                                                      |
| A8.                 | 3 Carrots (with tops trimmed and tied)                                                   | B27.                | 1 Hydrangeas                                                                           |
| A9.                 | 3 Beetroot (with tops trimmed and tied)                                                  | B28.                | 1 Vase of Flowers (5stems of 1variety)                                                 |
| A10.                | 3 Courgettes (not exceeding 150mm/6 ins)                                                 | B29.                | Patio Container (18"Max pot size)                                                      |
| A11.                | 1 Marrow                                                                                 | B30.                | Pot plant (flowering)                                                                  |
| A12.                | 1 Cucumber                                                                               | B31.                | Pot plant (foliage)                                                                    |
| A13.                | Any Brassica                                                                             | B32.                | 1 Cactus or Succulent                                                                  |
| A14.                | 3 Tomatoes (Not Cherry)                                                                  | B33.                | Fuchsia in any size pot                                                                |
| A15.                | 5 Cherry Tomatoes                                                                        | B34.                | Pelargonium (Geranium-upright only)                                                    |
| A16.                | 3 Cooking apples                                                                         | B35.                | Flower Arrangement in an unusual container (overall Height and width not exceeding 6") |
| A17.                | 3 Dessert apples                                                                         |                     | <b><u>Special Section: Allotment Holder Only</u></b>                                   |
| A18.                | Any Other 3 Fruit (same variety)                                                         |                     | Best Exhibit by an Allotment Holder                                                    |
| A19.                | Any other 3 Vegetable (same variety)                                                     |                     |                                                                                        |
| <b><u>Class</u></b> | <b><u>Section C : Children's</u></b>                                                     | <b><u>Class</u></b> | <b><u>Section D : Photographic</u></b>                                                 |
|                     | open to children aged 11 and younger on 1st September 2018, age to be stated on exhibit. |                     | (Un-mounted and Un-framed Max 7" x 5" )                                                |
| C36.                | Decorated Cress Egg head                                                                 | D41.                | Photograph – Within the Parish                                                         |
| C37.                | An Animal made from a paper plate                                                        | D42.                | Photograph – Single Flower                                                             |
| C38.                | Build your own Lego model. Theme:<br>Out Of This World.                                  | D43.                | Photograph – Water                                                                     |
| C39.                | A printed leaf and/ or vegetable pattern.                                                | D44.                | Photograph – Humorous Photo with Caption                                               |
| C40.                | A portrait of a family member in any media.                                              |                     |                                                                                        |
| <b><u>Class</u></b> | <b><u>Section E : Cookery</u></b>                                                        | <b><u>Class</u></b> | <b><u>Section F : Craft</u></b>                                                        |
| E45.                | Victoria Sponge/Sandwich (Jam filled &<br>Caster Sugar on Top)                           | F53.                | Any Crochet Article                                                                    |
| E46.                | Fruit Loaf/Tea Loaf                                                                      | F54.                | Any Knitted Article                                                                    |
| E47.                | Decorated Cake (Max 8")                                                                  | F55.                | Any Patchwork/Quilting/Applique                                                        |
| E48.                | Savoury Flan Max 8"                                                                      | F56.                | Any Tapestry/Cross-stitch                                                              |
| E49.                | 3 Sultana Scones (2" cutter)                                                             | F57.                | Any other Embroidery                                                                   |
| E50.                | Homemade Soft Fruit Jam                                                                  | F58.                | Handmade Soft Toy                                                                      |
| E51.                | Homemade Jar of Chutney                                                                  | F59.                | Art (Paintings or Drawings)                                                            |
|                     | Recycled glass jars acceptable with either a new lid or cellophane                       | F60.                | Any Other Craft                                                                        |
| E52.                | Man Cake (must be made by a MAN)                                                         |                     |                                                                                        |



# Allotment Society

Well - July already! It's been a busy time for us all. We've had several new members all of whom have made great progress on their allotments which despite the excessive rain, and now excessive heat, are looking really good. Welcome - and well done - to you all. And brilliant to see everyone else making their normal excellent progress too.

On June 9 we held a Funday at the Institute. This was partly to raise funds but also to simply have fun and take the opportunity for the whole village to meet up. We were blessed in many ways. The weather was brilliant. There were 68 stalls spread throughout the Institute and onto the grounds in front - this included craft, cake and plants stalls as well a bouncy castle and ice cream van. We send our heartfelt thanks to the many businesses and volunteers - too many to mention - who were so generous in many ways. We couldn't have done this without you - thank you. The total raised, after expenses, was £466.56 which will be used for the benefit of the allotment community.

Upcoming events include: a barbecue on the allotment site on July 28 (12-3) - allotment members old and new are all welcome; also we have a 'Build a Scarecrow' and picnic day on August 12 (12-2), as we intend to compete in the Ifton Meadows Scarecrow competition on Sunday August 19th. We will also be manning a stall at Ifton Meadows on August 19th. It sounds like a lot of fun.

Finally - all the allotments are full currently, but we do have a waiting list, so if you would be interested in taking an allotment (or part of one) when a site does become available, please do contact us by email on [SMallotmentassociation@outlook.com](mailto:SMallotmentassociation@outlook.com)



---

For more crime prevention advice please feel free to get in contact with me.

Please report anything suspicious to the police on 101.

**Kate Le'Clere, PC 3718**

**Oswestry Rural North, Safer Neighbourhoods Team**

**Mobile – 07870 219518**

**PCSO Dave Hughes – 07870 219190**

**PCSO Pete Roberts – 07870 219019**

Please contact us on the above numbers if you have any issues you wish to discuss. E-Mail - [oswestryrn.snt@westmercia.pnn.police.uk](mailto:oswestryrn.snt@westmercia.pnn.police.uk)

**To report a crime please dial 101 or in an emergency dial 999**





# ST. MARTINS SERVICE STATION Ltd

## M.O.T'S, SERVICING & REPAIRS



- TYRES
- EXHAUSTS
- BATTERIES
- DIAGNOSTIC TESTS
- CLUTCHES
- TIMING BELTS



**BRILLIANT OFFERS ON TYRES**

**GIVE US A CALL!!!**

**CLASS IV MOT'S ONLY £35**

**ALL CARS AND COMMERCIAL VEHICLES UPTO 3000KG**

**MAXXIS®**  
MAXIMUM PERFORMANCE

**WE ARE NOW A MAXXIS TYRE DEALER WITH A LARGE RANGE OF TYRES IN STOCK AND AT GREAT PRICES!!!**

**DONT'T FORGET WE ALWAYS HAVE GREAT OFFERS IN OUR CONVENIENCE STORE POP IN TO SEE THE LATEST!!!**



**OFF LICENCE**

**NEWS & MAGS**

**BREAD & MILK**

**CONFECTIONARY**

**HOUSEHOLDS**

**CALOR GAS**



**SAVE 1p PER LITRE**

**WITH STAR REWARDS**

**01691 772318**

**STORE OPENING TIMES: MONDAY- SATURDAY 6:30AM—9PM**

**SUNDAY 8AM—8PM**

# St. Martin of Tours Parish Churchyard Regulations



The Diocese of Lichfield sets out what is and what is not permitted in the churchyards of the diocese.

As the document setting out the regulations is a lengthy one, we have set out below the relevant information to enable you to consider the appropriate information when considering a memorial for your loved ones.

Before doing so it is important to remember that churchyards are consecrated to God, and accordingly must be treated with reverence and cared for in a manner consistent with that status. They must be fitting and appropriate, showing a sensitivity and awareness of others and be in keeping with the appearance of our medieval Grade 1 listed Church.

There are also practical considerations as the Churchyard grass has to be cut regularly and any obstructions do cause problems.

It must be remembered therefore that a churchyard is not a private place and many people have a shared interest in its appearance. Accordingly, what is placed in a churchyard cannot simply be a matter of personal choice and every memorial **must** be approved by the Parochial Church Council on behalf of the Chancellor of the Diocese of Lichfield.

**Visitors to the churchyard are reminded that no food, drink or alcohol is permitted to be consumed in the churchyard or left on a grave.**

## **The burial plots:**

Maximum size is 7 feet long x 3 feet wide, including concrete base and headstone.

The ground in front of the headstone *belongs to the church*.

## **The memorial is:** The headstone and plinth

Grey, red or green granite or slate are allowed. Polished face only.

Once the ground has settled, been levelled, grassed over and the headstone placed, then it is respectfully asked that none of the items on the list below are put on the memorial, headstone or burial plot. This will allow for ease of maintenance, grass cutting and neatness.

Memorials and burial plots that do not currently comply with these regulations are kindly asked to do so, by 1<sup>st</sup> October 2018.

Where plots are deemed to be excessively adorned, the Parochial Church Council (P.C.C.) may remove any item(s) that cause(s) an obstruction to the maintenance of the churchyard or impinge on neighbouring burial plots or cause Health and Safety issues.

Please ensure that all dead flowers and wreaths are removed on a regular basis.

Thank you for your co-operation in complying with these regulations.

NB. Stonemasons be advised that if **any** regulation of the diocese or P.C.C. is contravened without prior permission, you may be asked to remove the memorial or headstone.

Items which are **not** allowed on the memorial, headstone or plot:

- ♦ kerbs, railings, stone or glass chippings or artificial grass.
- ♦ any part of a memorial or element of a memorial which involves concrete, metal, glass, material, plaster or plastic objects whether in the form of model people, animals or toys or otherwise.
- ♦ any item designed to make a noise when moved by the wind or which lights up.
- ♦ fully polished granite, marble or synthetic stones (Polished face only are permitted)
- ♦ memorials may not bear photographs or portraits
- ♦ any homemade monument other than a wooden cross, no more than 3 feet high.

**The memorials for infants or children under 16 years of age, will be more sensitively considered, but the number of lights or other objects should not be excessive.**

These regulations came into force on 1<sup>st</sup> June 2018.



## **St Martins Youth Club 25<sup>th</sup> Anniversary year.**

St Martins Centre is our third home as we started out at The Chapter House followed by the Scout Hut. We have always been totally self financed, using grants and entry fees to pay the rent, fund activities and pay for staff training. All of our helpers are volunteers giving up their time for free!!

Over the past year our volunteers have attended Shropshire Youth Association training courses gaining qualifications in Food Hygiene, 1<sup>st</sup> Aid at Work, Safeguarding and CEOP (Child Exploitation & On Line Protection).

### **CAFE ZONE**

*Toast. Pancakes*  
*Hot Chocolate Squash*

### **GAMING ZONE**

*PS111 Twister*  
*and more.*

**YOUTHIE starts back on SEPTEMBER 7<sup>th</sup>**

**7.30 – 9.00**

**Year 6 and older welcome**

**£2 to include ALL zones (ALL FOOD FREE).**

### **CRAFT ZONE**

*Pyrography T shirt designs*  
*And more*

### **CHILL OUT ZONE**

*No mobiles – just chat!*

**St Martins Centre**

## **ST MARTINS CENTRE**



**"THE OF THE COMMUNITY"**

***Overton Road, St Martins, Oswestry. SY11 3AY***

***Tel:01691770204***

***Email:stmartinscentre@mail.com***

***Facebook: St Martins Village Centre***

**OPEN: Monday – Friday 10.00 – 2.00**

**FREE Wi Fi & computers**



**Need help with laptop/tablet? Want to update your IT skills?**

**Come along on a Tuesday 10.00 – 2.00.**



**Rooms available for hire for PARTIES, CONFERENCES,  
and MEETINGS.**

**Day time, evenings and weekends £10 an hour**

## **ST MARTINS BOOK BOX**

**Over 500 fiction paperbacks – free to borrow**



**St Martins Centre is run by volunteers for the village. Please feel free to pop in and meet us. More volunteers would be lovely, sorting books, helping in the office or just making coffee and chatting to visitors!**

***Overton Road St Martins, Oswestry SY11 3AY***

***Tel: 01691 770204***